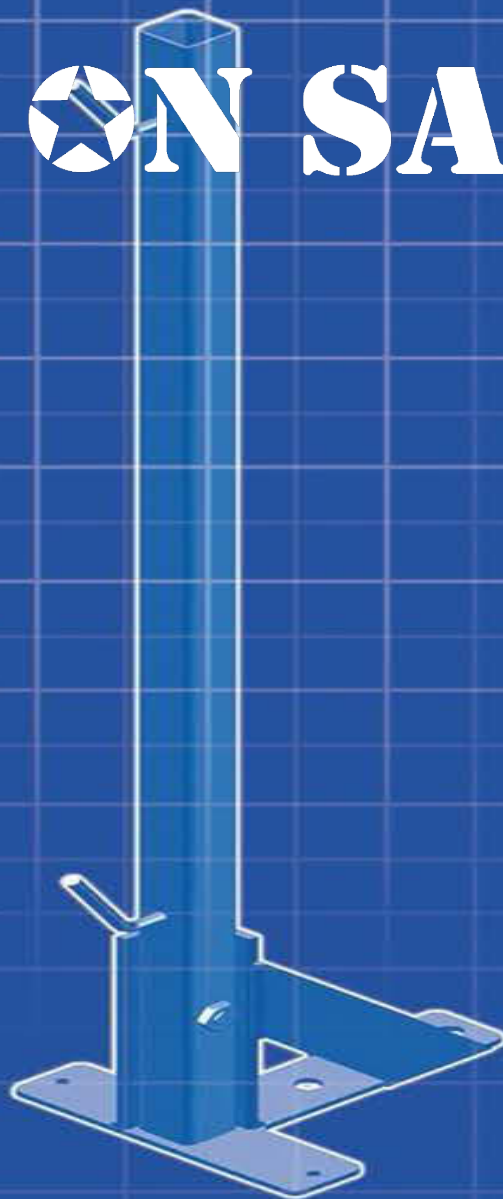
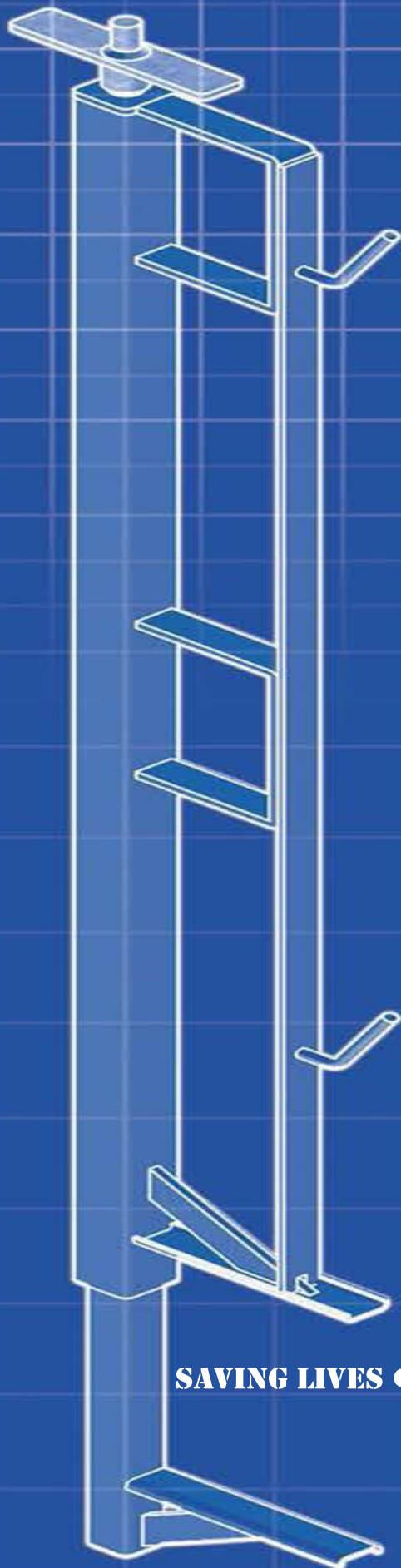


SPOT ON SAFETY



**SAFETY AND SAVINGS
THROUGH INNOVATION**

SAVING LIVES • ENHANCING SCHEDULES • CREATING SAVINGS

**(844) 8-SPOTON
1.844.877.6866
WWW.SPOTON-SAFETY.COM**



SPOT ON SAFETY

Spot On Safety manufactures, distributes, and resells, innovative construction products & services geared to saving lives, time, and money.

Only manufacturer of the patented “ArmStrong” passive restraint device for engineered edge protection in the US, leading to few or no moving parts.

Serving all industries with a focus on vertical commercial capital projects, industrial and heavy highway industries.

AlphaEdge is the clear choice for protecting your crews while increasing productivity and longevity of your assets.



Core Values

Safety is a survival issue at SOS. First and foremost, we are committed to the safe work environment for all our clients and the construction industry. In addition to meeting OSHA's requirements, our equipment is manufactured to last for 15+ years with component level galvanizing, inside and out, which will prevent leaching, rusting and product deterioration no matter the environmental conditions they are used in.

Average Annual Installed Cost Per Foot With Continued Maintenance

Wood or 2x4's	\$52.11+/-
Cable & Clamp	\$35.42+/-
AlphaEdge	\$27.06+/-

Let Us Show You The Difference Today

CUSTOMER SATISFACTION

Since the company's inception, SOS has established strong repeat customer relationships. We seek to move toward partnerships with our clients and recognize that the process requires an investment in time combined with consistent excellent performance.

Our reputation for helping our clients in making their sites safer, their processes more efficient while saving time and money has spread across industries and is driving our growth.

FINANCIAL PERFORMANCE

Spot On Safety is financially sound and has the capital required to respond to our customers growing needs.

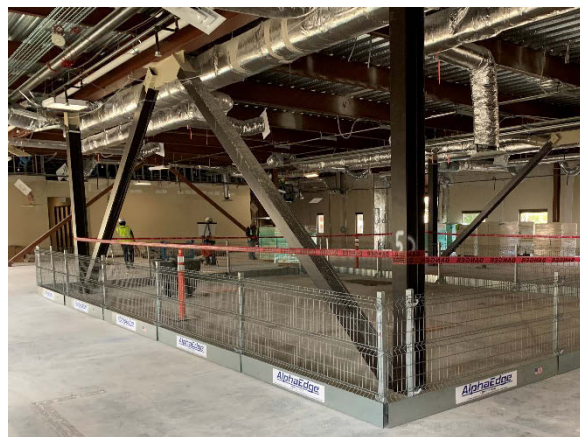
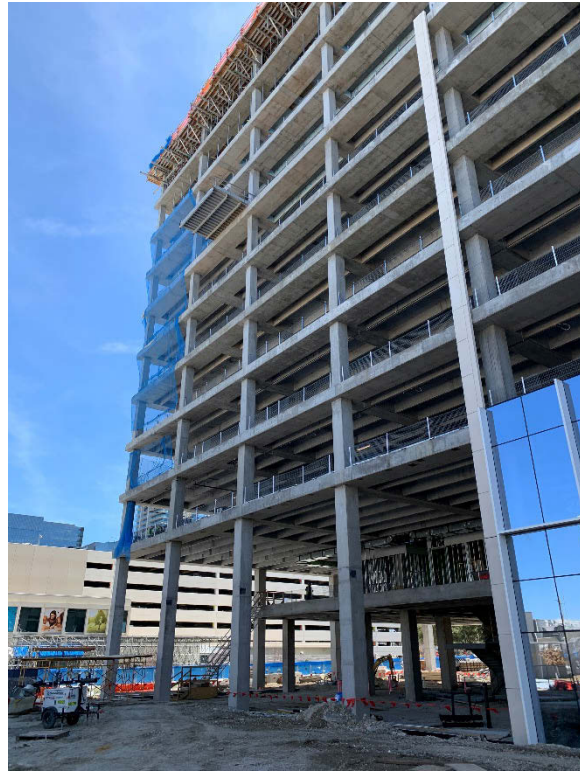
MANUFACTURING

Our goal is to build superior products to anything else in the marketplace today. The AlphaEdge was created for the contractor by the contractor. Every innovation incorporated into the product has been a result of a contractors need for something better, safer, and more efficient. All products are American Made and constructed of heavy-duty steel prepped and costed with high performance hot dipped galvanizing to withstand even the harshest of environments and the rigors of any construction site.

ALPHAEDGE

Innovation is at the core of Spot On Safety. The AlphaEdge System is a perfect example of these innovations.

- Patented PASSIVE restraint “ArmStrong” Design.
- AlphaEdge is a true “GREEN” product, all materials are recyclable. If a portion of an AlphaPanel is damaged, either repair it or cut off the damaged portion and return the AlphaPanel to service as a shorter but still effect component, and the cut off damaged portion is recycled, nothing ever goes to landfill.
- No AlphaPanel is greater than 8’6” in length and has no frame or border, thus making it ergonomically beneficial for your team members. Easily move racked panels into buck hoists or site elevators.
- AlphaEdge designed Racks and Baskets are Forklift, Crane, and Pallet Jack ready.
- All material is 100% galvanized, will not rust, or leach rust onto concrete.
- All panels easily repairable, no structural borders to render panel unusable. Nearly all damage to the AlphaPanels can be repaired thus putting the panel back into service. Other system’s panels cannot be repaired if the frame is bent beyond repair, the panels must be thrown away.
- AlphaPanel(s) design - 100% galvanized #6-gauge wire, meeting all OSHA guidelines/parameters regarding temporary handrail/guardrail requirements.
- NO CLIMB mesh design with 2” x 4” vertical grid, preventing climbing of panels, AND, making our AlphaPanels strong and robust.
- Use as Edge Protection or Site Security Fencing, universal product.
- Our patent pending Seam Spiral and Seam Bar, minimizes vertical posts and allows for unique configurations
- Made exclusively in the USA.



MODULAR TEMPORARY ENGINEERED EDGE PROTECTION SYSTEM

AlphaEdge

➤ Alpha Panels

- 8" Toeboard welded to bottom
- Rigid lightweight, easily stackable and easy to move
- Meets OSHA requirement for 200 pounds of force in any direction yielding less than 3" deflection
- Meets OSHA height requirement 42" in height
- Can be stacked to reach 7', 10', and full floor to ceiling height



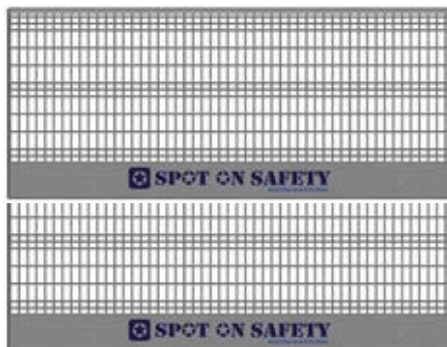
42" & 60" Tall x 8' 6" long



42" & 60" Tall x 4' 2" long

➤ Alpha Compression Posts

- Up to 12'-6" ceiling height
- Built in 650# rated compression spring, with visual aid
- Lightweight and easily installed by one team member
- Mostly galvanized



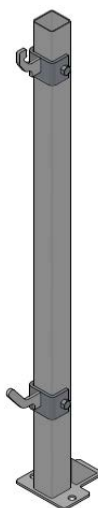
84" Tall x 8' 6" long



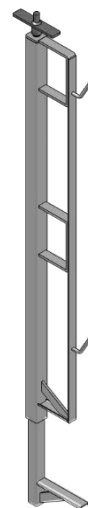
84" Tall x 4' 2" long

➤ Alpha Drill & Fixed Posts

- 3'-6" tall, high grade steel to meet extreme lateral forces and rigors of construction sites
- Used for all levels of vertical rise buildings, concrete working deck, bridge and overpass work walkways
- Lightweight and easily installed by one team member
- 100% galvanized



42" Drill & Fixed Post



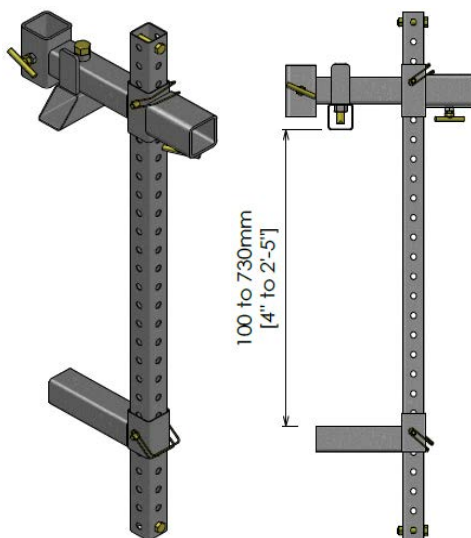
42" Slab Grab



7' to 13' Compression Post

➤ Alpha Slab Grabs

- 2" x 2" High grade steel to meet extreme lateral forces and rigors of construction sites
- Jaws open to impressive 40"+
- Lightweight and easily installed by one team member.



Universal 40" Parapet/Slab Grab

PATENTED "Passive Restraint" Device. No moving parts, or tools required to install, remove, or replace panels.

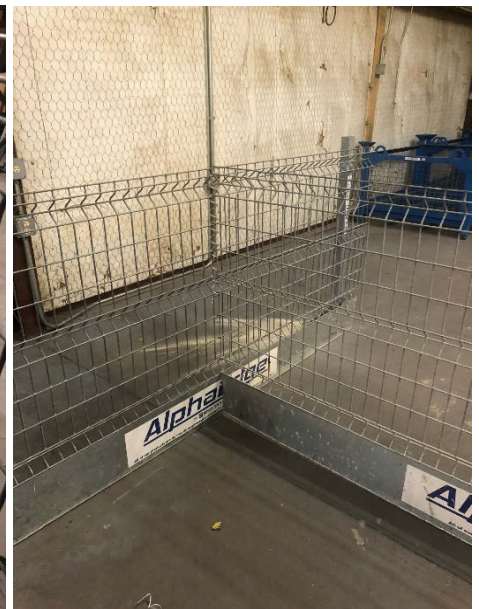


The innovations never stop at Spot On Safety. From do-it-yourself repairs to seaming your own panels to fit a particular situation or minimize vertical post requirements, the AlphaEdge is your “go-to” Engineered Edge Protection system with the **Highest Return On Investment (ROI)** in the industry.

- When extreme conditions call for extreme measures, the Alpha Panels can be easily customizable to fit any situation while maintain structural integrity with our easy to use “Seam Bar” or “Seam Spiral”.
- When you need to cut, overlap, create a 90 degree corner, or section off a work area, the seam bar and corner seam spiral enables this to be done with minimal effort. Any pieces, sections or modifications can be easily incorporated “on-the-fly” into the system to conform to the high demands of any job site.
- Did we mention our edge protection wire-mesh panels can be used as site security fencing as well? With the addition of two fence panel connectors, you can convert your edge protection system into a “modular” site security fence, mountable on water filled jersey barriers.
- Spot On Safety is disrupting the fencing industry with its new and improved “Modular Fencing System” Need a 42” tall crowd control system today and a 7’ tall security fence tomorrow? Well, simply stack the panels with the use of our seam bars and seam spirals to achieve any height desired while maintaining structural integrity.



Purchase a repair table with your next order and keep your inventory in tip-top shape.

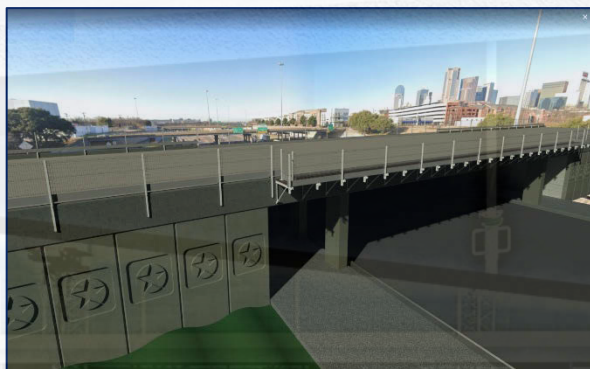


Seam Bar & Seam Spirals make easy work of any configuration needed.

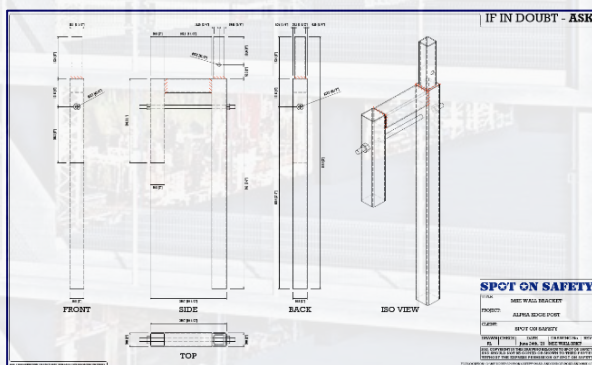
BRIDGE & HIGHWAY BRACKET & MSE WALL

AlphaEdge

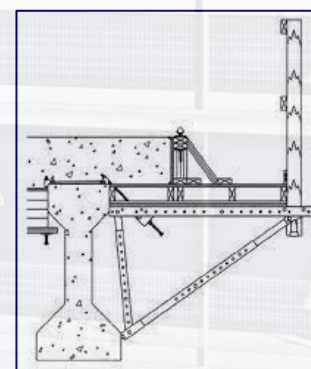
Spot on Safety has all your guardrail solutions for the heavy highway contractor. Whether a pocket adapter for the C49 series overhang bracket or SME wall guardrail system Spot On Safety can ensure your crews are safe, and secure, while enhancing production and increasing efficiencies on your next project.



Deploy Spot On Safety guardrail system by adding C49 adapter bracket to your C49 overhang brackets and eliminate the reoccurring cost of lumber and 2x4's on your next project.



If you have a special application or need for an adapter component or bracket to eliminate the high costs of lumber or if you are looking for sustainable green solution gains for your organization, Spot On Safety can help you get there.



You need an alternative solution to SME guard railing. Look no further. Spot Safety has 100% galvanized materials to prevent rust, and rust leaching to the finished surfaces of your project. Call today to get a quote on your next project.

BROKEN BRIDGES

Percentage of Damaged* Bridges, by State

10 Worst States

Rhode Island	56.5%
Massachusetts	52.5%
Hawaii	43.9%
Pennsylvania	42.2%
New York	38.8%
New Jersey	35.5%
West Virginia	35.3%
Connecticut	34.9%
Vermont	33.1%
Maine	32.9%

10 Best States

Minnesota	11.5%
Arizona	12.1%
Nevada	13.7%
Wisconsin	14.0%
Utah	14.7%
Illinois	15.9%
New Mexico	16.6%
Colorado	16.7%
Florida	16.9%
Montana	17.2%

*Structurally deficient or functionally obsolete
Source: <https://www.transportation.gov/policy-initiatives/grow-america/road-and-bridge-data-state>

AdjustaStairs are specifically designed for faster and safer lower-level height access - between project floors, into trenches and more - especially where inadequate, unstable, and unsafe ladders are used

The AdjustaStairs design brings the full convenience and functionality of permanent stairs to situations where the portability of a ladder is required.

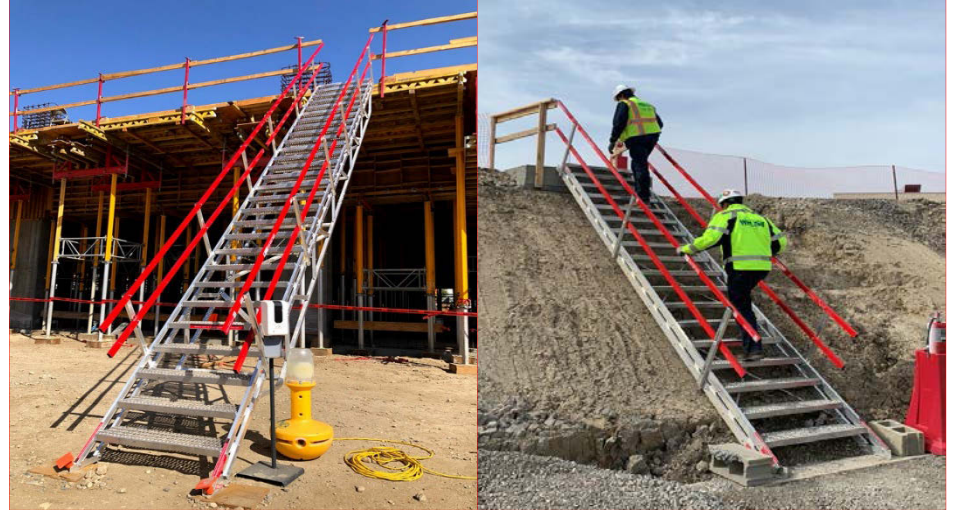
These stair systems feature self-levelling steps, so you can stand on a completely flat tread when the unit is placed at a variance of pitch angles – from 25° to 50°. And when you need to transport it, the unit packs down flat in one movement via collapsible handrails and steps that auto-fold back within the side rails.

Benefits in Summary

- Instant and safe temporary staircase – far superior to traditional wooden worksite steps or standard ladders.
- Weight rated at anywhere from 660lbs to 1100lbs, depending on the model.
- OSHA-compliant.
- An easy two-person installation and redeployment job.

A lightweight vehicle variant is also available, for faster and safer access to flat beds and trailers of trucks and more: the AdjustaStairs truck trailer ladder.

Access for builders, trench diggers, infrastructure workers, excavation teams, builders, and anyone else who needs safe and efficient temporary access with the same stability as a permanent system.



Steps Height Range Weight Rating

6	3' - 4'9"	660 lbs
8	4' - 6'4"	660 lbs
10	5' - 8'	660 lbs
12	6' - 9'7"	660 lbs
14	7' - 11'2"	660 lbs
16	8' - 12'9"	660 lbs
18	9' - 14'4"	660 lbs
20	10' - 16'	660 lbs
22	11' - 17'2"	1110 lbs
24	12' - 19'2"	1110 lbs
26	13' - 20'9"	1110 lbs
28	14' - 22'4"	1110 lbs
30	15' - 24'	1110 lbs
32	16' - 25'7"	1110 lbs
34	17' - 27'2"	1110 lbs
36	18' - 28'9"	1110 lbs
38	19' - 30'4"	1110 lbs
40	20' - 32'	1110 lbs

Crane Loading Platforms, aka Outrigger Platforms, play an essential role in a multilevel project.

Are sub-contractors using the elevator to move their materials?

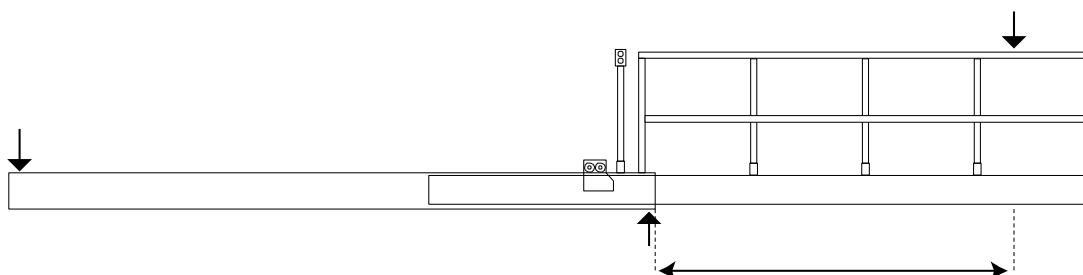
DOC Loading Platforms allow building materials to be delivered to any floor of the building without slowing down the elevator or crane and adding costly delays.

Our Loading Decks can handle larger and heavier loads than a construction elevator, boosting productivity and traffic flowing on the job site.

When combined with the DOC Material Hoist, the DOC System provides a separate material hoisting solution that keeps tower cranes and elevators on-task.



DOC 9.0 – 10 Loading Platform	Up to 7500 lbs Loading Capacity	Static Or Electric
DOC 6.5 – 12 Loading Platform	Up to 7500 lbs Loading Capacity	Static Or Electric
DOC 9.0 – 12 Loading Platform	Up to 7500 lbs Loading Capacity	Static Or Electric



Luffing Hoists



High-Rise Material Handling Made Easy

High-rise contractors using DOC® to move materials instead of the elevators can save tens of thousands of dollars on labor costs over the course of the project.

DOC Hoisting Systems

Are you racking up significant overtime costs moving materials after-hours and during weekends?

When the tower crane and elevators are busy, many contractors resort to moving materials during off-hours. Keep overtime costs in check, by adding a separate dedicated material hoisting system that can move materials during regular job site hours.

Capable of lifting 8,000lbs, the DOC Material Hoist can handle longer, heavier materials than a construction elevator. Delivering large loads like curtainwall, pipe, windows, and drywall is possible without slowing down the tower crane.

No certification is required to operate the Material Hoist, so contractors can unload materials from the truck themselves without waiting for crane time.



We manufacture our equipment using quality steel and components right here in the USA, with a Service and Support team built to match. Give us a call to speak with a DOC representative today.



The benefits of adding a DOC® Material Hoisting System are hard to ignore:

- Significantly reduce overtime labor costs
- Speed up project timelines
- Improve site safety
- Move large materials like pipe & curtainwall
- Unload trucks faster with less street congestion
- Keep tower cranes on task
- Keep construction waste out of elevators
- Unload trucks faster with less street congestion

more than nets

Spot On Safety represents one of the most progressive netting manufactures in world today. With distribution centers around the world Visonets brings innovation, quality, and simplicity in every product they manufacture.

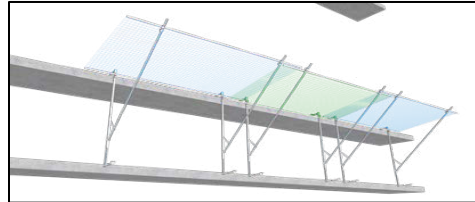
Visonets is one of the largest safety netting manufacture and collective protection system designer in the world.

SAFETY NETS

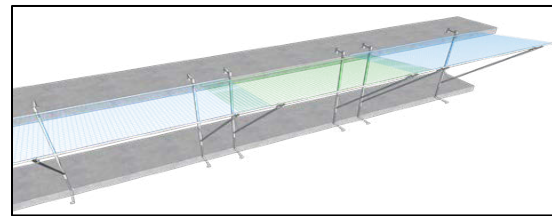
- Safety Net Type S
- Safety Net Type T-Evo Fan
- Safety Net Type U
- Safety Net Type V

PROTECTIVE NETS

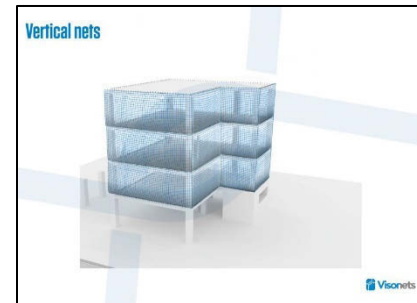
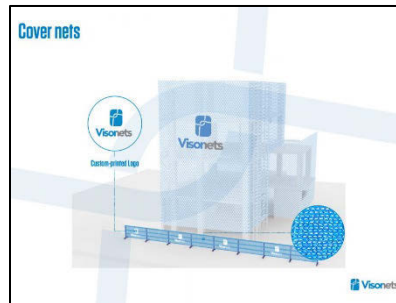
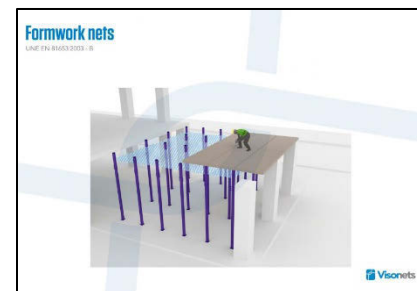
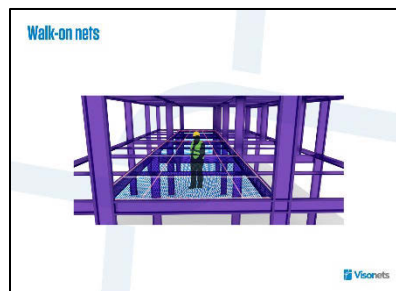
- Vertical Nets
- Formwork Nets
- Walk-On Nets
- Debris Nets
- Cover Nets



Type T-Evo Building Fan Nets



Type T-Evo Building Fan Nets



Job Site Fencing



What? It's Universal?

The ONLY UNIVERSAL Edge protection system in the world today.

Use as leading edge protection on the job site or as job site security fencing.

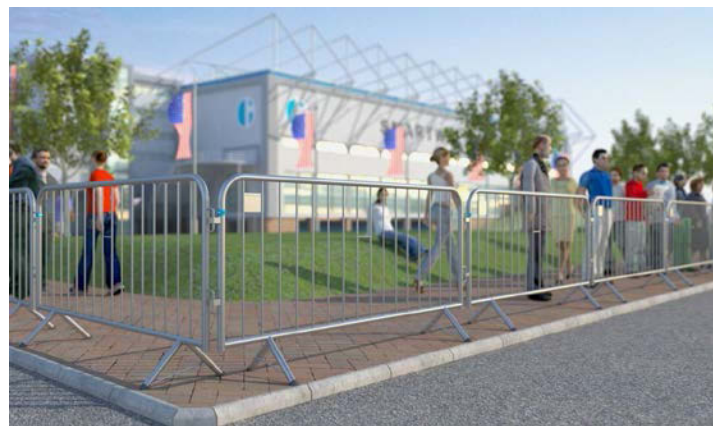
Spot On Safety is reinventing job site security fencing for the first time in decades.

That's right, the AlphaEdge system is a one of kind system design to work as project edge protection or as site security fencing. The flexibility and configurations are endless.

Mountable on Jersey Barriers or free standing, our AlphaEdge Panels can be used as Job Site Fencing at various heights. A standard 42" tall panel can be used as highway dividers, or stack two panels for a seven feet (7) height for job site security. Whether your needs are 42", 5', 6' or even 8' tall, Spot On Safety has the solution.

Designed of #6 gauge, 100% galvanized, anti-climb wire mesh, the system will provide a strong and robust anti-climb barrier keeping out or keeping in whatever, you need.

Spot On Safety also offers standard fence types at an extremely competitive price. Whether fencing or Jersey Barriers Spot On Safety is your one source, one-stop-shop for all your safety and security supplies.



Pedestrian Barriers for any occasion.

Security fencing whether job site or event Spot On Safety has what you need.



Accessories of all kinds whether you need a door entrance or access gate we can accommodate your needs.



Design & Fabrication

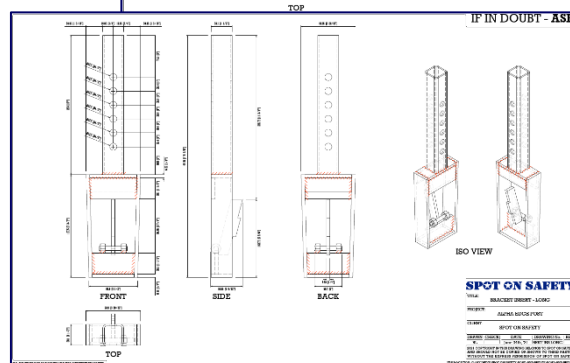
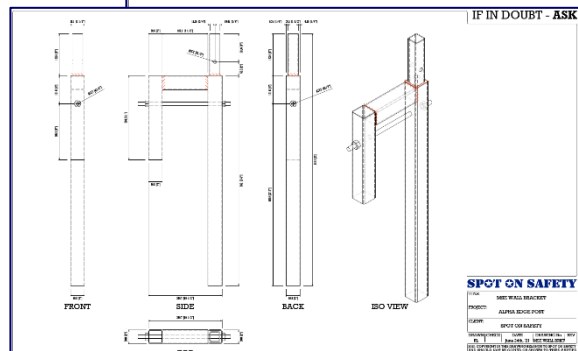
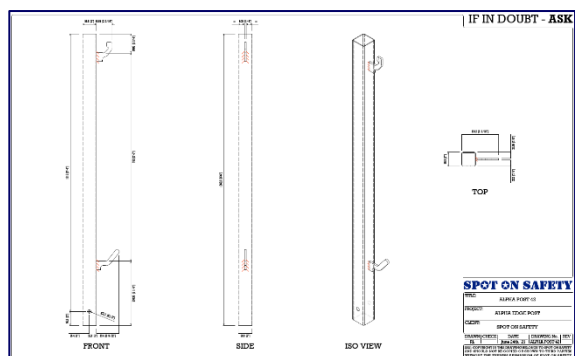
Do you need a specialty product or device?

Spot On Safety has you covered. We can design, fabricate and mass produce any specialty product, device, adapter, bracket, basket, rack or component to make your job safer, easier, efficient and cost effective.

Out of necessity and due to high demand Spot On Safety began fabricating adapters and crane baskets and racks for clients in all industries.

Spot On Safety designed a special adapter for the C49 Series Bridge Overhang Bracket for one of the nations largest Bridge and Highway Contractors in the US.

The adapter allowed them to continue to use the many C49 overhang brackets in their inventory while upgrading their fall protection system for the C49 bracket.



Safety Equipment



Since 1994, Safewaze has been on a mission to save lives and livelihoods. As fall protection's most responsive partner, Safewaze provides quick and flexible solutions for all fall arrest, rescue, and confined space needs. With a 100,000 square foot facility and a growing, passionate team, they relentlessly pursue excellence to ensure workers are trained and protected by the best in modern fall protection. From anchors and harnesses to lifelines and lanyards, they deliver exactly what you need, exactly when you need it.

Safewaze University is your go-to destination for fall protection training and educational resources created to help you maintain a safe workplace.

If you are looking for training or simply need PPE inspection check lists Safewaze products and services by Spot On Safety is the place to go. Including specialized equipment specifically for the following industries.

- Concrete
- Construction
- Steel Erection
- Scaffolding
- Roofing
- Industrial
- Electrical & Mechanical
- Utilities
- Oil & Gas
- Wind Energy
- Solar
- Towers

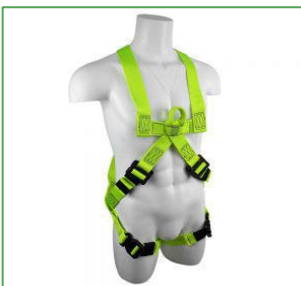
As one of the country's largest specialized harnesses manufacturers you are guaranteed to find exactly what you're looking for.

- Fire rated harnesses
- Oil Derrick harnesses
- Wind energy harnesses
- Welding harnesses
- Arc-flash harnesses
- And many more

If you need anything "Fall Protection" Spot On Safety has the answer. Whether harnesses or Connectors, Anchors or Lifelines or whole kits for any industry please call Spot On Safety today.



PRO+ Premium
Wind/Rope
Access/Rescue Harness



PRO+ Fire Rated Harness
with 3 D-Rings
FS77326-FR



PRO+ Fire Rated Harness
with 3 D-Rings
FS77326-FR



6' Dual-Leg Stretch Low-
Profile Energy Absorbing
Lanyard w/Rebar Hook
FS596



11' Dual Leg Leading Edge
Cable Retractable w/Steel
Rebar Hooks
SW-8008-11LE-RBH-DL



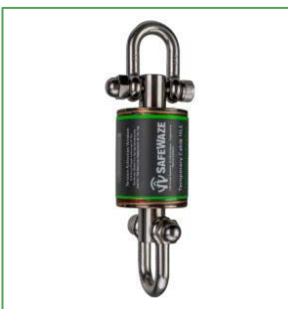
Class B 100' Cable Poly
Housing Retractable
FS-EX10-100-G



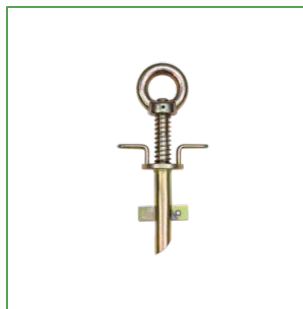
Complete Stanchion
Assembly for 4" to 18"
I-Beam 019-8038



SafeLink Loop Rebar Base
019-8051



Tension Indicator
019-8031



Girder Grip Anchor
019-4007



Vertical /Stationary Beam
Anchor
019-4009



Beam Trolley Anchor
018-4001

Free Up Company Resources

“FREE SERVICE” brought to you by Spot On Safety LLC.

Free up your Project Managers, Site Resources, and your Procurement Department from sourcing bids and quotes for services such as Scaffolding and Specialty Engineering Services.

With over fifty (50) years combined experience in the construction industry Spot On Safety has the knowledge and knowhow to source and evaluating competitively bid contracts for your next project.

The service is more than qualifying a contractor based on price alone. Spot On Safety will source a minimum of three quotes anywhere in the USA from one of the largest databases of scaffolding and engineering contractor in the country.

With a constant ear to each industry and an exhaustive effort in identify new business startups and current challenges facing larger existing companies Spot On Safety will bring to you the best value for your capital outlay.

Spot On Safety will quote three suppliers of your choosing or we will draw three from our extensive database of companies. All quotes will be fully disclosed and provided to the client in Spot On Safety’s final evaluation.

Evaluation is based on a scoring system taking into consideration **RFQ compliance, thoroughness, responsiveness, exceptions, and clarifications**. Each report is generated in a concise, easy to read format that allows the client to make side-by-side comparison of each quote thereby allowing the best educated award.

Spot On Safety evaluation will provide a minimum three quotes evaluating **price, availability, lead time, safety, geographic locations, freight costs, service ability, craft qualifications, product line, engineering capabilities, multi-craft, or multi-contractor opportunities**.

SPOT ON SAFETY				
Scaffold Supplier Evaluation Form				
See Legend At Bottom Of The Page				27-Sep-21
Bidder Company Name	Acme Company	X, Y, Z Company	AAA Equipment	Freedom, LLC
Division Of Affiliation	None	The Brock Group	None	None
Bidder Representative	Mr. Dallas	Mr. Houston	Mr. Texas	Mr. Tulsa
Servicing Location(s)	Dallas, TX	Houston, TX	Beaumont, TX	Tulsa, OK
Bidder Qualifications				
Size In Dollars	6MM	1.3B	1MM	1MM
Employee Count	28	11,000	12	16
Safety Performance	2	3	3	3
Do you Currently Provide Labor Services In Dallas	Yes	No	No	No
Design Capabilities	Yes	Yes	No	No
Service Performance	3	2	2	2
Geographical Coverage	TX, OK	All US States	TX	OK, AR
Type Of Equipment Quoted	Pinlock	Pinlock	Pinlock	Pinlock
New Or Used Equipment	Used	New	N/A	N/A
Payment Terms	Net 30	Net 30	Net 30	Net 30
Contract Terms	Legal Review	Legal Review	Legal Review	Legal Review
Compliance & Responsiveness				
Bidder Comply w/ Request For Proposal (RFP)	3	2	5	5
Bidder Met Due Date	4	3	5	5
Bidder Responsiveness (1-5)	3	2	5	5
Final Drawing Upon Award	1	1	5	5
BOM Provided With Quote	5	1	5	5
Service Performance	3	2	2	2
Cost Performance	3	2	5	5
Accurate Drawing Provided With Quote	3	3	5	5
Ease of Doing Business	2	2	3	3
Lowest - Best Score	27	18	40	40
Purchase Price Quoted	111,291.31	46,465.16	N/A	N/A
Project Specifics				
Stair Tower w/Landing To Roof Elev.	Yes	Yes	N/A	N/A
Stair Width, Turnaround Width	?	40"/42"	N/A	N/A
Loading Platform To Roof Elev.	Yes	Yes	N/A	N/A
Plywood Included On Loading Platform	Yes	Yes	N/A	N/A
Trach Chute to	NO	NO	N/A	N/A
No. Of Feed Hoppers	1	1	N/A	N/A
Meets the	1	1	N/A	N/A
Eq	3	3	3	3
W	1	1	1	1
Safety	12	9	4	4
Tube Clamp	10	1	4	4
Frame & Brace	13	1	4	4

Spot On Safety free consulting service allows the contractor to keep their resources dedicated to project tasks rather than spending time and money coordinating suppliers request for scope of work, answering questions, and clarifying the scope with three separate suppliers.

Spot On Safety will be your single source for multiple bids at NO COST to you.

Alternatively, Spot On Safety will make it’s extensive contractor database available to you free of charge by visiting our website at www.spoton-safety.com and completing the request for contractor services (RFC) form.

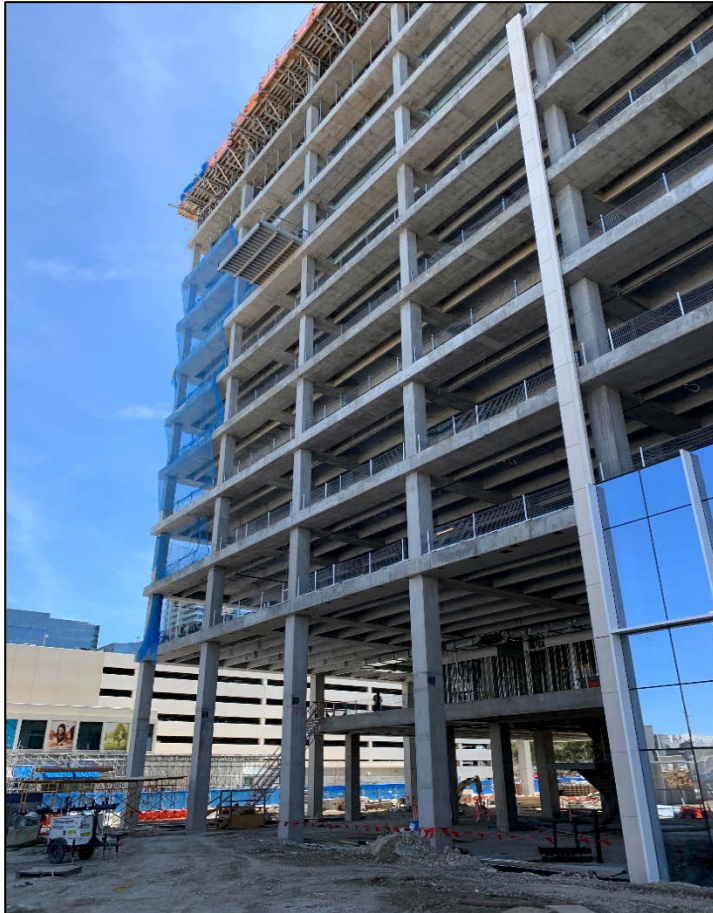


Project Highlights & Client Testimonials



Don't take it from us, see what our clients are saying about Spot On Safety products and services. Visit our web site today at WWW.SPOTONSAFETY.COM and click on the link "Client Testimonials".

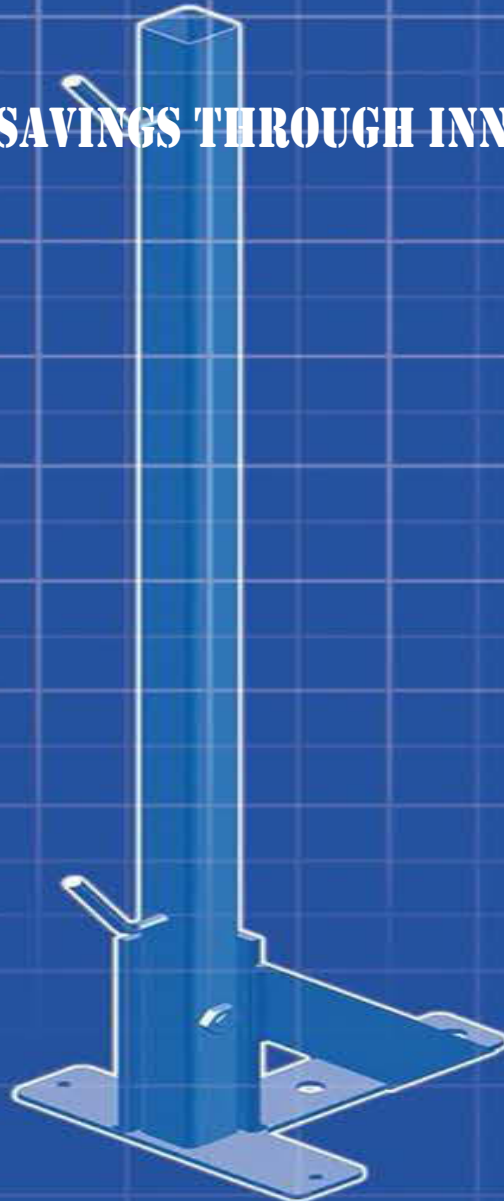
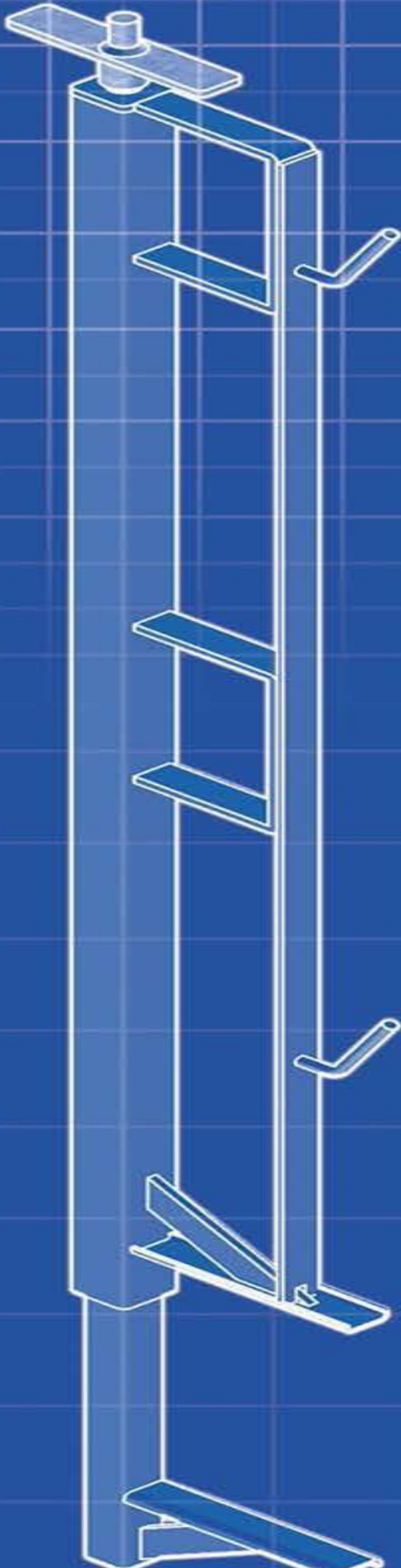
Rogers O'Brien Safety Spotlight highlights the costs savings and easy of use of the Engineered AlphaEdge Protection System on one of their projects.



WWW.SPOTONSAFETY.COM



SAFETY AND SAVINGS THROUGH INNOVATION



Corporate Office
Athens, TX
Office: (903) 931-1605

Western Division
Denver, CO
Office: (801) 556-3232

Southern Division
Dallas, TX
Office: (214) 783-1312

(844) 8-SPOTON
1.844.877.6866
WWW.SPOTON-SAFETY.COM

